

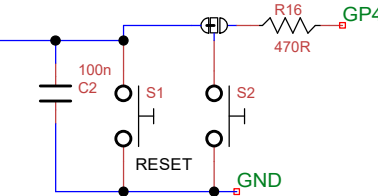
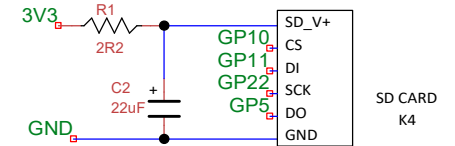
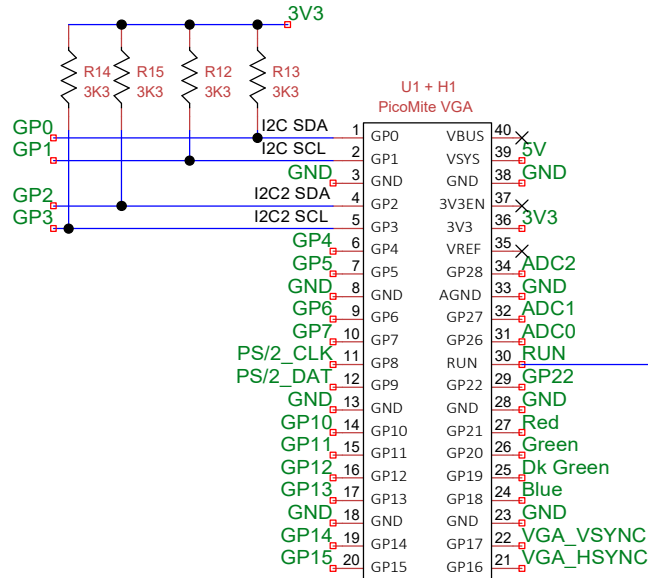
I2C2 SCL / GP3
I2C SCL / GP1
GND
3V3
I2C SDA / GP0
I2C2 SDA / GP2

Use with RJ14 6P4C plug for system I2C connection on GP0 and GP1.

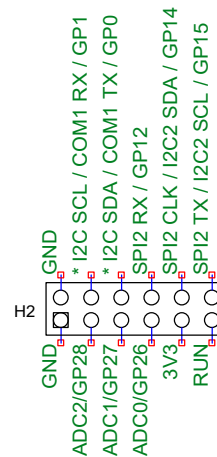
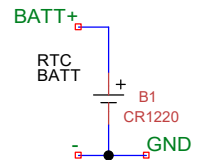
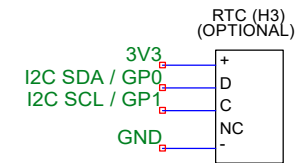
Use with RJ12 6P6C plug for SNES controller.

There are 3K3 pullup resistors on GP0-GP3 so both I2C ports are available.

CONTROLLER PORT
RJ12 6P6C SOCKET

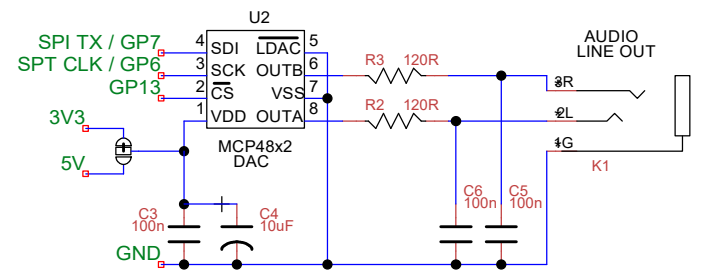


Optional. For optional RTC module.



EXPANSION PORT

These connections are uncommitted
* except System I2C



| | | |
|---|--------------------|------------------|
| Title Pineapple Pi-Mite VGA | | |
| Author Mixel90 | | |
| MMBasic by Geoff Graham + Peter Mather | | |
| File Z:\Computing\0 Pico ... pineapple pi-mite.dsn | Document | |
| Revision 1.0 | Date 4 Jan 2024 | Sheets 1 of 1 |